



A PROVEN DIFFERENCE

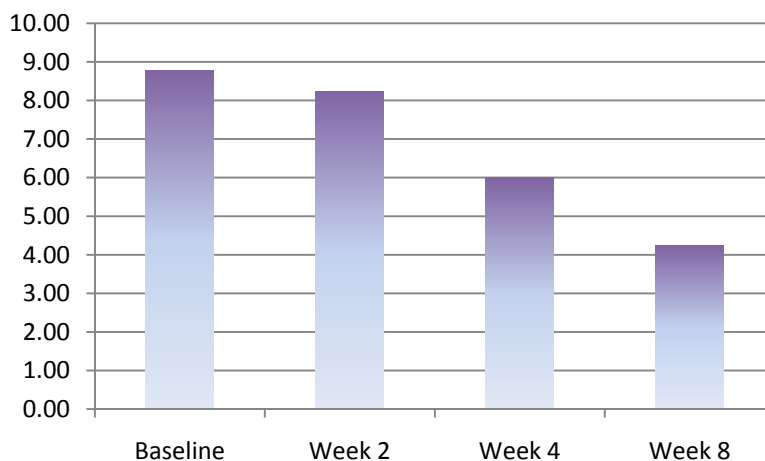
Recent independent studies show that DermaTherapy® Bedding can effectively relieve the discomfort associated with night sweats and hot flashes. In 2007, Northeast Surgical Associates of Ohio, LTD evaluated the efficacy of DermaTherapy® Bedding to control night sweats and improve the quality of life for 28 postmenopausal women. Over a period of eight weeks, the women were asked to sleep on DermaTherapy Bedding and record their experience.

A COMPREHENSIVE ANALYSIS

Two evaluation tools were used in the study. The first, the Pittsburgh Sleep Quality Index (PSQI), is a questionnaire designed to assess sleep quality. Consisting of seven components, the PSQI measures sleep quality, sleep latency, sleep duration, habitual sleep efficiency, sleep disturbance, use of sleep medications and daytime dysfunction.

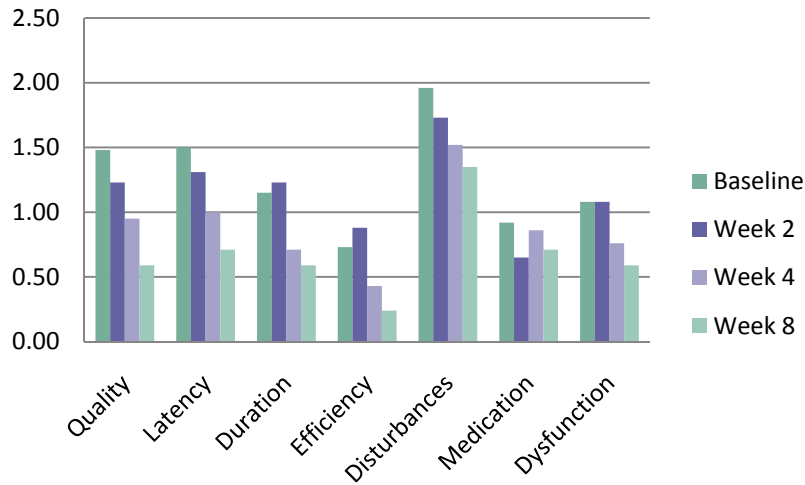
The secondary form of evaluation is a Quality of Life (QOL) assessment that measures an individual's ability to keep cool, amount of sweating and perceived comfort while using DermaTherapy® Bedding.

COMPELLING RESULTS



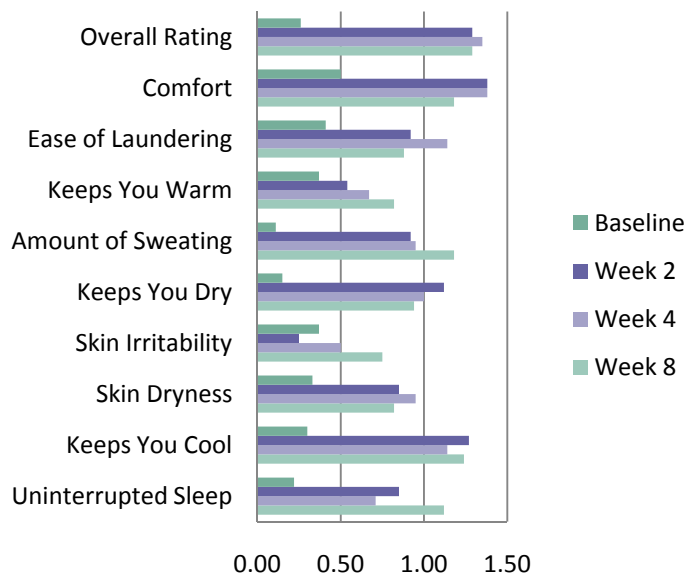
DermaTherapy® Effectiveness Relative to Total PSQI

For many menopausal women, the benefits of DermaTherapy® Bedding were immediately apparent. Initially, most participants had a mean global PSQI score of almost 9 - characterizing them as "poor sleepers". After using DermaTherapy® Bedding for 4 and 8 weeks, global PSQI scores improved dramatically. As shown, the average scores indicate that study participants moved into the category of "good" sleepers by Week Eight.



DermaTherapy® Effectiveness Relative to PSQI Components

DermaTherapy® Bedding also affected scores in a majority of the PSQI components. By weeks four and eight, Subjective Sleep Quality, Sleep Latency, Sleep Duration, Sleep Disturbances and Daytime Dysfunction had seen dramatic improvements.



DermaTherapy® Effectiveness Relative to Quality of Life Scores

Statistics show that quality of life improved substantially within the first two weeks. And during the subsequent six weeks, all parameters including: Amount of Uninterrupted Sleep, Skin Dryness, Ability to Keep Cool, Ability to Keep You Dry, Amount of Sweating, Comfort and Overall Perception improved substantially throughout the duration of the study.

CONCLUSIONS

This study demonstrates that state-of-the-art DermaTherapy® Bedding is an effective form of sleep therapy. As a compliment to hormone replacement therapy, these unique bed linens offer menopausal women a natural way to relieve the discomfort of night sweats and hot flashes. The study also revealed:

- Global PSQI scores, the measure of overall sleep quality, indicated that poor sleepers could regain normal sleep habits with the use of DermaTherapy® Bedding.
- Specific components of sleep quality, including Subjective Sleep Quality, Sleep Latency, Sleep Duration, Sleep Disturbances and Daytime Dysfunction were significantly improved.
- Enhancements in the overall quality of life in terms of the Amount of Uninterrupted Sleep, Ability to Keep Cool, Ability to Keep Dry, Amount of Sweating and Comfort were seen after only two weeks of using DermaTherapy® Bedding.

© 2007 DermaTherapy is a registered trademark of Precision Fabrics Group Inc.
All Rights Reserved. PFG • 301 N. Elm St. • Greensboro, NC 27401
1-888-733-5759 • Traci.Broughton@precisionfabrics.com